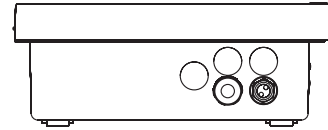
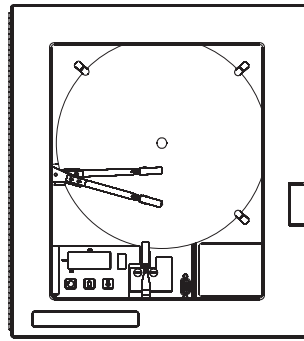
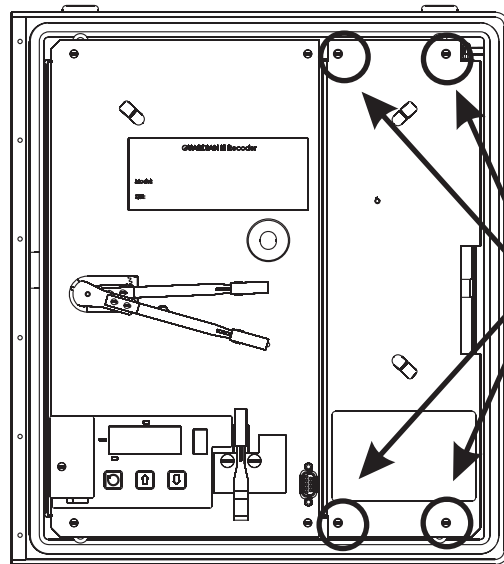


Guardian III - Field Wiring and Installation



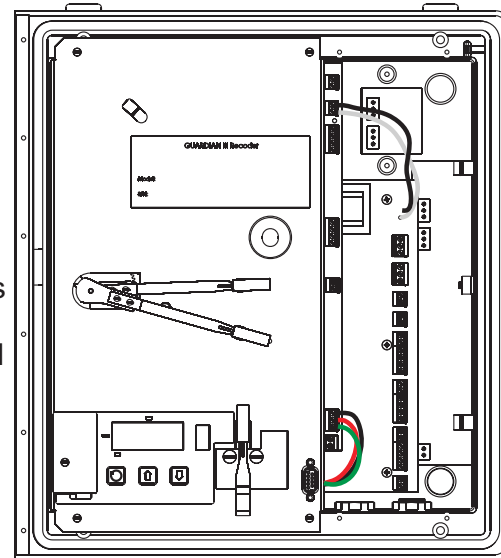
Bottom of case has pre-drilled wiring penetrations. It is not recommended that additional case penetrations be made.

View With Access Cover Installed



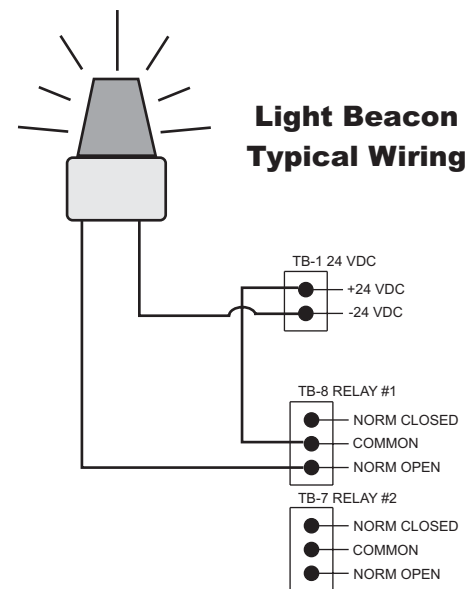
Loosen Four Screws To Allow Access Panel To Be Removed

View With Access Cover Removed



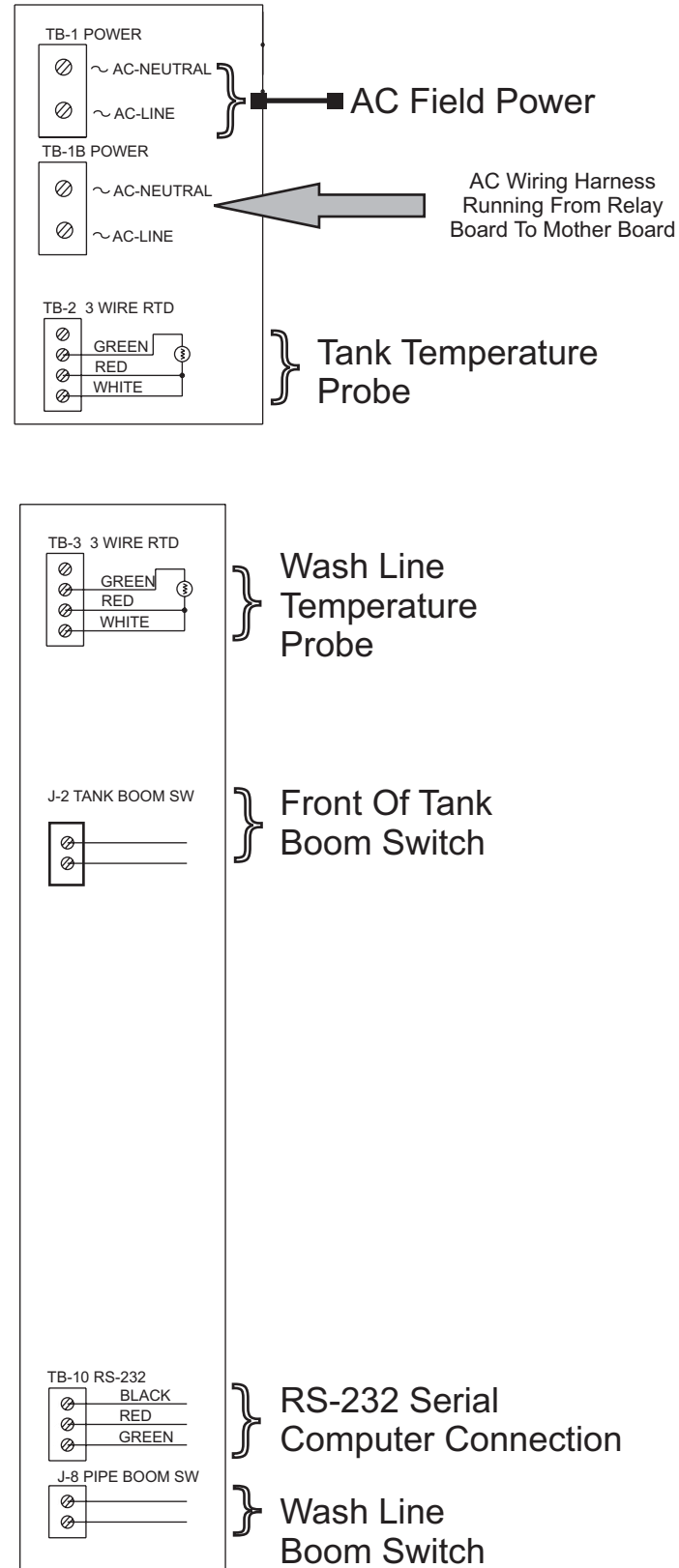
CAUTION
BE SURE ALL POWER IS DISCONNECTED PRIOR TO MAKING WIRING CONNECTIONS

NOTE
FOR PROPER CONNECTION, IT IS RECOMMENDED ALL WIRE TERMINATIONS BE STRIPPED AND SOLDER TINNED



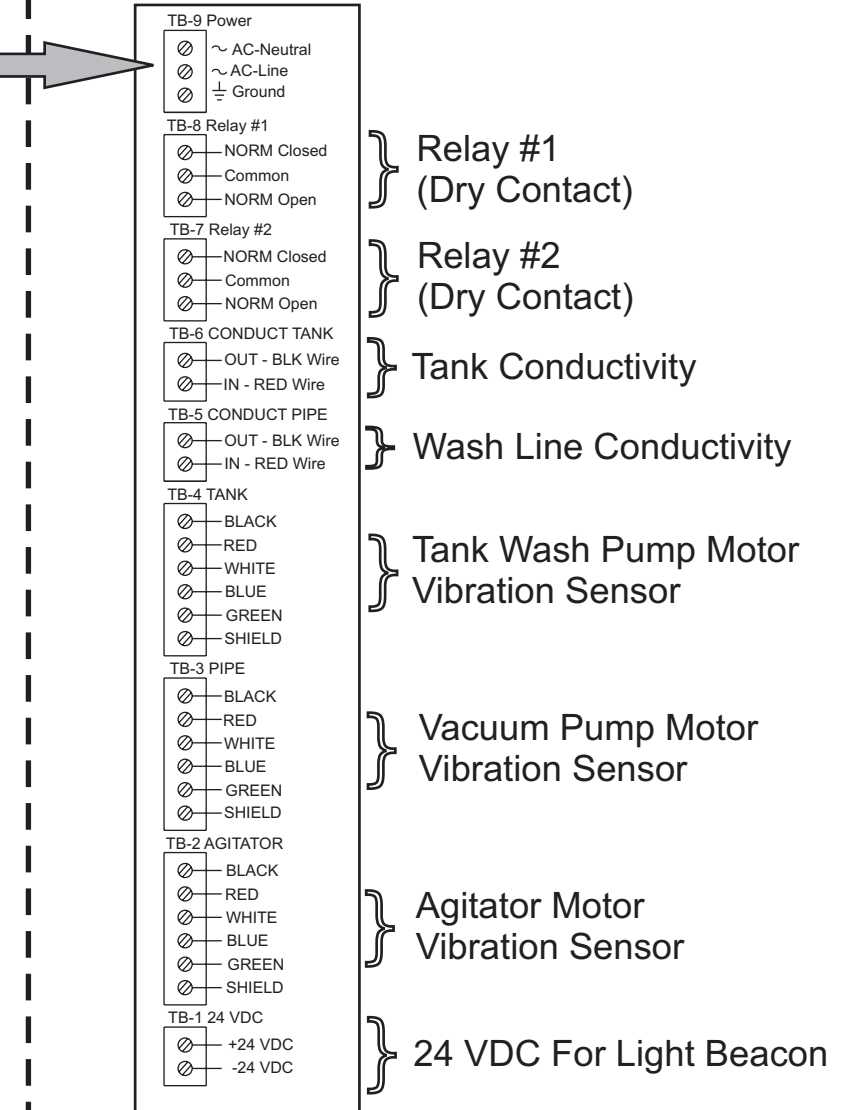
Light beacon may be pre-installed on top of case, or ordered with a wall mount bracket.

Motherboard Terminal Connections



Relay Board Terminal Connections

Note: Actual Relay board components may differ depending on recorder model ordered.



Anderson Instrument Co., Inc.
156 Auriesville Rd.
Fultonville, NY 12072

Phone: 800-833-0081
Fax: 518-922-8997

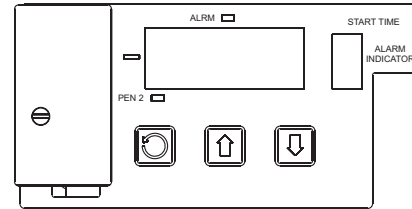
Power Up Procedure

Power up in PROGRAM mode to disable alarm monitoring.

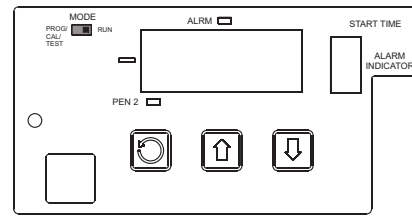
This mode allows fine tuning of sensors to be completed without registering alarms.

When tuning of sensors is complete, switch unit to RUN mode - system will wait for tank wash to be completed before system monitoring becomes active.

Cover plate in place

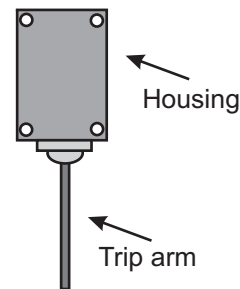


Cover plate removed



Access to Run/Program Switch

Whisker Switch Installation



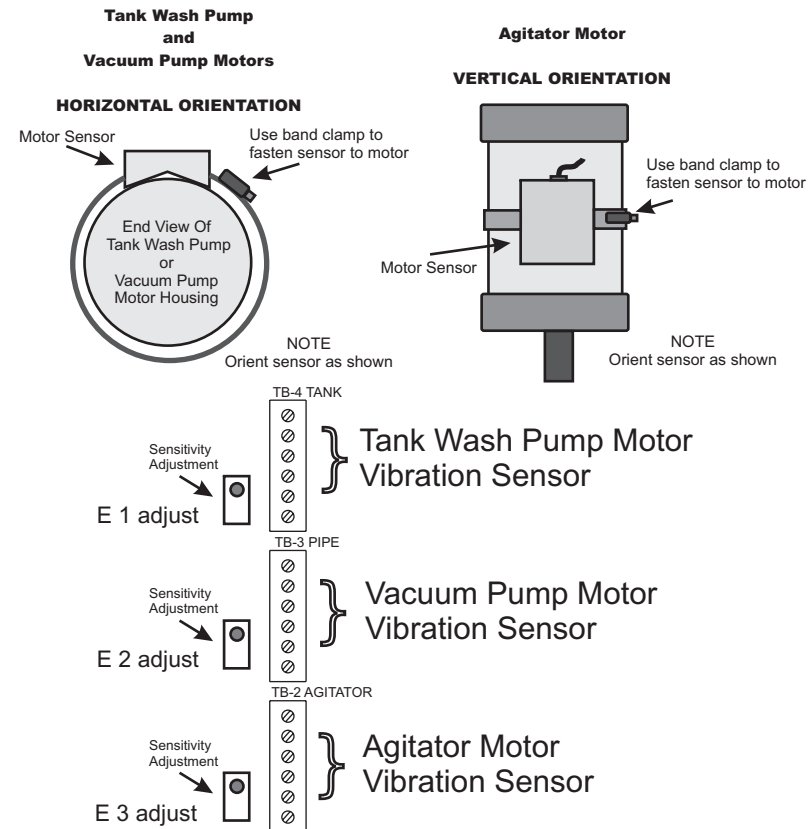
Wash Line

Switch is installed so that it trips when wash line swing arm is in milk or wash position. Most systems have an existing switch for the wash system - mount this switch so that both trigger upon swing of line.

Tank

Switch mounting will differ depending on tank type. Switch is mounted to catch position of tank valve handle. With valve in open position, switch should provide an open circuit.

Motor Sensor Installation



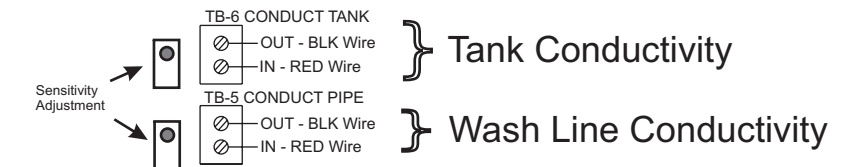
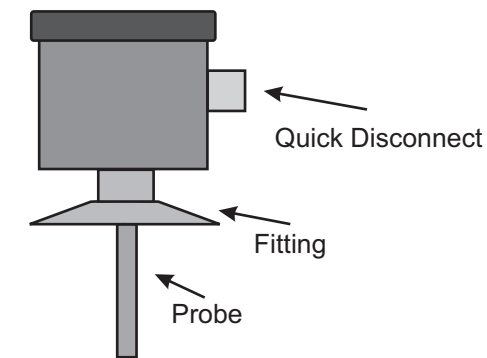
Prior to fine tuning, motor sensors should be installed onto motor housings. Motors should not be operating while adjustments are being made. Once sensor mounting complete, power recorder. Be sure to observe "Power Up Procedure" as described. Using the following procedure, sensitivity may be adjusted.

- Be sure you are in program mode
- Press SCROLL key until "test" is visible on display
- Press DOWN ARROW to enter test mode, then SCROLL to "t In"
- Press DOWN KEY and SCROLL to "E 1xx"
- Display may show either "E 1on" or "E 1of"
- Turn corresponding sensitivity adjustment until you are at the edge of "E 1of" and "E 1on", with the display showing "E 1on"
- To properly set sensitivity, turn the potentiometer ONE full turn counterclockwise. This will set at the proper point.
- Display should now show "E 1of" - a slight tap on the corresponding sensor will cause display to flash "E 1on"
- Once complete, press DOWN ARROW to advance to E2 setting, following same procedure.
- Once complete, press DOWN ARROW again to advance to E3 setting.

Once complete, use UP arrow to exit TEST menu.

Tank and Line Wash Conductivity Sensor installation

Conductivity Sensor



Conductivity Sensor Placement

Wash Line

Typical installation of probe is at bend of wash line swing arm.

Tank

Typical installation is either between wash motor and tank entry, or at swing arm above tank.

The sensitivity of the tank and wash line conductivity circuit has been "rough" calibrated at the factory. It is suggested that these settings be tested first. If proper firing of the event pen does not happen, fine tuning may be accomplished as follows:

Requirements: Small vessel of WATER
Small vessel of WASH SOLUTION
(Mixed to proper concentration)

- Be sure you are in program mode
- Press SCROLL key until "test" is visible on display
- Press DOWN ARROW to enter test mode, then SCROLL to "t In"
- Press DOWN KEY and SCROLL to "CoPx"
- Display may show either "CoP0" or "CoP1" - this display corresponds to the PIPELINE SENSOR
- Place the PIPELINE sensor into the vessel of WASH solution - immerse to include the fitting and probe
- There is a short delay of approximately ten seconds, to eliminate effects of air spikes, prior to switching
- If the display is showing CoP1, turn the sensitivity adjustment by 1/2 turn counter clockwise, pause approximately ten seconds, repeating until display shows CoP0
- Turn sensitivity clockwise, pause ten seconds, repeating until display just changes to CoP1
- To properly adjust, turn sensitivity five turns counterclockwise - this will set sensitivity to wash solution concentration greater than plain water, but less than full solution
- Test in WATER only vessel to be sure sensitivity is set high enough so that only a CoP0 is shown
- Once complete, press DOWN ARROW to advance to "Cotx" (Tank) following same procedure as above.